

February 2026 HUDDLE

Link to recording:

<https://www.youtube.com/watch?v=kBzRWH3apWg&list=PLh5mk8BxSPgi3zcGTCTm1L9KMhyeElyHQ&index=1>

Please find the handout from Daniel Bogle attached as well as the resource guide Breann Jensen shared. If you would like to connect further with Daniel and/or Breann, please find their contact information below:

- Daniel Bogle
Health Policy Director
Missouri Department of Health and Senior Services
Daniel.bogle@health.mo.gov
573-522-2843
- Breann Jensen
Administrator
Lafayette County Health Department
breann.jensen@lpha.mo.gov
660-259-4371



MISSOURI DEPARTMENT OF
**HEALTH &
SENIOR SERVICES**

Health.Mo.Gov



MISSOURI DEPARTMENT OF
**HEALTH &
SENIOR SERVICES**

Civics and Legislation 101

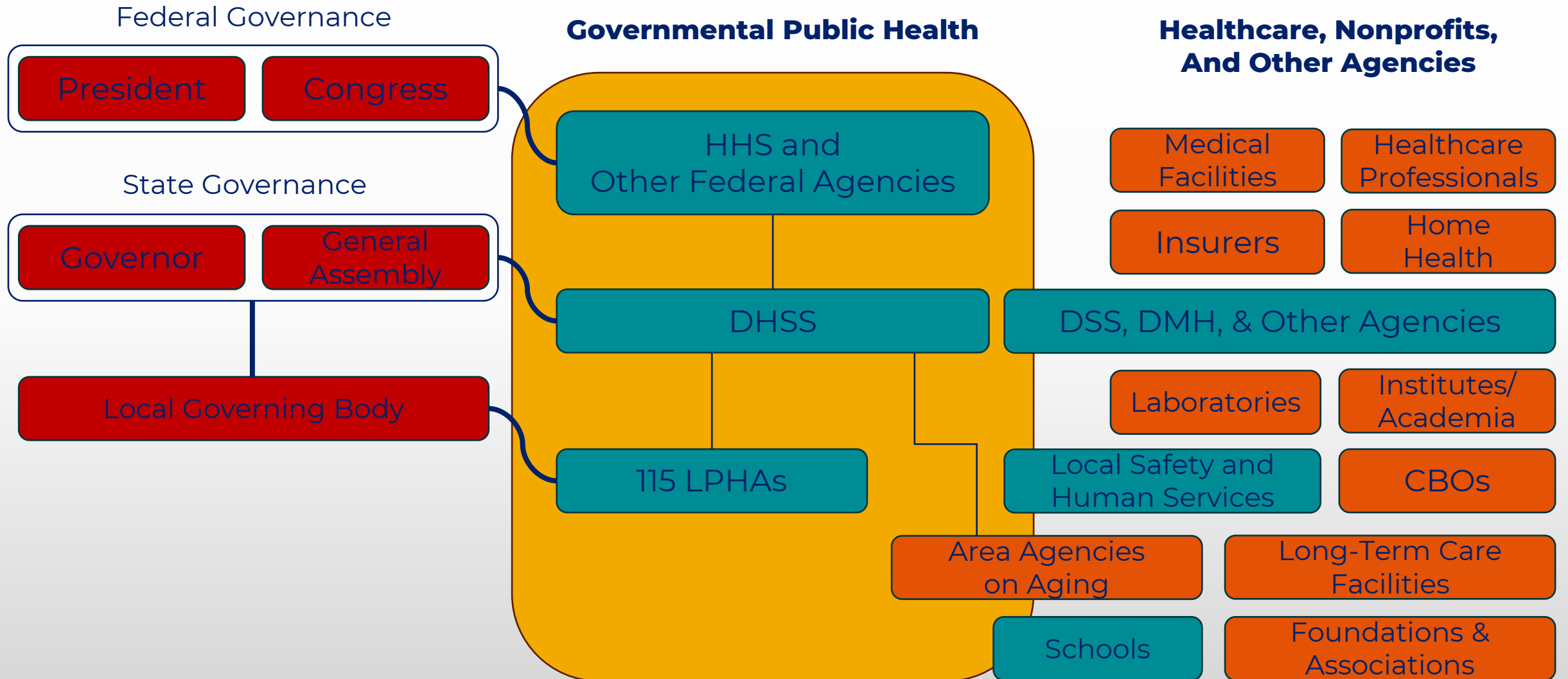
A primer on the principles and processes behind Missouri government

Daniel Bogle
Health Policy Director









Missouri's Public Health System



Public Health System Structure



History of Missouri Public Health

- 
- 1866  First local health department formed in Kansas City
 - 1883  State Board of Health first established
 - 1939  Missouri law authorizes county commissions to appoint county health officers
 - 1945  Board of Health replaced by Division of Health in the Department of Public Health and Welfare
 - 1974  Division of Health moved to Department of Social Services
 - 1985  Department of Health created
 - 2001  Division of Aging transfers, creating the Department of Health and Senior Services

History of Public Health in Missouri

- In 1939, the first law was passed giving county commissions the option to appoint a licensed physician as their county health officer (*192.260, RSMo*). Some counties were also allowed to appoint deputy or assistant county health officers (*192.270, RSMo*).
- The health officer's duty is to “enforce the rules and regulations of the department of health and senior services throughout their respective counties outside of incorporated cities which maintain a health officer.” (*192.280, RSMo*)
- In 1945 a new law was passed that requires county commissions to appoint the director of the public health center as their county health officer (*205.100, RSMo*).

County Health Centers (Section 205)

- Section 205 establishes the process to create County Health Centers, establish governance, and set tax levies for operations.
 - Voter approval for establishment of the health center and setting the maximum tax to support the county health center's operations.
 - The approved tax is levied and collected by the commission and credited to the health center fund (205.020.2 & 205.042.3, RSMo).
 - Trustees set the annual rate of the tax levy, though it cannot exceed the maximum rate authorized by the vote of the people (205.042.8, RSMo).
- County Health Centers are governed by a Board of Health Trustees
 - Trustees are elected, though the county governing body shall make appointments for vacancies (205.031.4, RSMo) or when not enough people file to run for trustee (205.041, RSMo). Appointees may only serve until the next municipal election.

County Health Departments / Units

- Two routes of public health authority can result in county health department systems of governance:
 - Non-charter first class counties create a county health department as a department of county government (205.141, RSMo)
 - These counties are permitted – but not required – to appoint a county health officer.
 - Charter counties create a public health agency via charter, who then determine agency governance by charter
 - St. Louis County, St. Charles County, and Jackson County
 - (Clay and Jefferson Counties are charter counties but established health centers through a vote of the people, not through their charters)
- Alternative means of formation not explicitly specified in statute.

Cities and Contracts

- There are two ways a city can create a health department:
 - Charter cities may create a city health department within their charter, making it a legal entity within their city government.
 - This is a power presumed under the Missouri Constitution, Article VI, Section 19.
 - Non-charter cities (third- and fourth-class) are authorized to enact ordinances securing health and welfare and to appoint city commissioners (Chapters 77 & 79). Third-class cities may establish a board of health to carry out ordinances.
 - Jefferson City, Florissant, and St. Peters each have established a health division or department, but they perform limited functions.
- Established by Contract:
 - Political subdivisions (Counties and Cities/Counties) may contract with each other to provide a common service (Chapter 70).
 - Missouri statute does not explicitly authorize city-county health departments, but the ability is presumed under the concept that those cities and counties already have independent legal authority to form health departments *and* can contract with each other for common services under Chapter 70.

Responsibilities to the Community



Public Health as a Converging Discipline



Role of Public Health

County Health Center Purpose: “for the improvement of health of all inhabitants of said county or counties.”

DHSS: “It shall be the general duty and responsibility of the department of health and senior services to safeguard the health of the people in the state and all its subdivisions.”

Local Public Health Powers: County commissions and county health center boards are authorized to make and promulgate orders, ordinances, rules, or regulations to enhance public health and prevent the entrance of diseases into the county (192.300, RSMo).

- State rules and regulations supersede local rules and regulations (192.290, RSMo).
- They therefore cannot conflict with DHSS rules and regulations (192.300, RSMo).
- Cannot impose standards on agricultural operations that are inconsistent with, in addition to, different from, or more stringent than Missouri law (192.300.1(2), RSMo).

Interjurisdictional Responsibilities

State and local health agencies serve as their jurisdictions' "Public Health Authority" and at the local level the Health Officer has specific statutory authority.

Counties and Cities: Both counties and cities have the authority to create ordinances protecting public health, even if there's only a county health department.

- County health officers have authority in unincorporated cities *and* within incorporated cities that do not maintain a health officer (Section 192.280).
- When a city of less than 75,000 people maintains a health officer then the city health officer has authority (Section 192.280).
- Cities with populations over 75,000 people that maintain an organized health department are exempt from the statutes that govern county health officers and supremacy of DHSS regulations (Section 192.310).
 - Kansas City, City of St. Louis, Springfield, Columbia, and Independence

School Districts: Schools have their own responsibilities related to student health from state statute. These responsibilities can sometimes overlap with LPHA services or authority. School nurses practice under their own license.

Missouri Legislative Process



Process for Local Legislation

How exactly does a county, city, or board of health make and promulgate orders, ordinances, rules, or regulations?

State law is not prescriptive!

- State law does prescribe the local legislative process for villages, towns, and cities of the 3rd and 4th class – but this does not apply to any health departments.
- Charter cities and counties establish their own local legislative process via charter.
- Counties are given responsibilities and powers by statute but are not governed by a statutory process for enacting orders, ordinances, rules, or regulations.
- Boards of Health “shall make and adopt such bylaws, rules and regulations for its own guidance and for the government of the county health center as may be deemed expedient for the economic and equitable conduct thereof.” (Section 205.042.3)

The general process for local legislative processes is for an elected member of the governing body to introduce a measure and for it to be enacted on a majority vote. However, the procedural specifics can vary widely between jurisdictions.

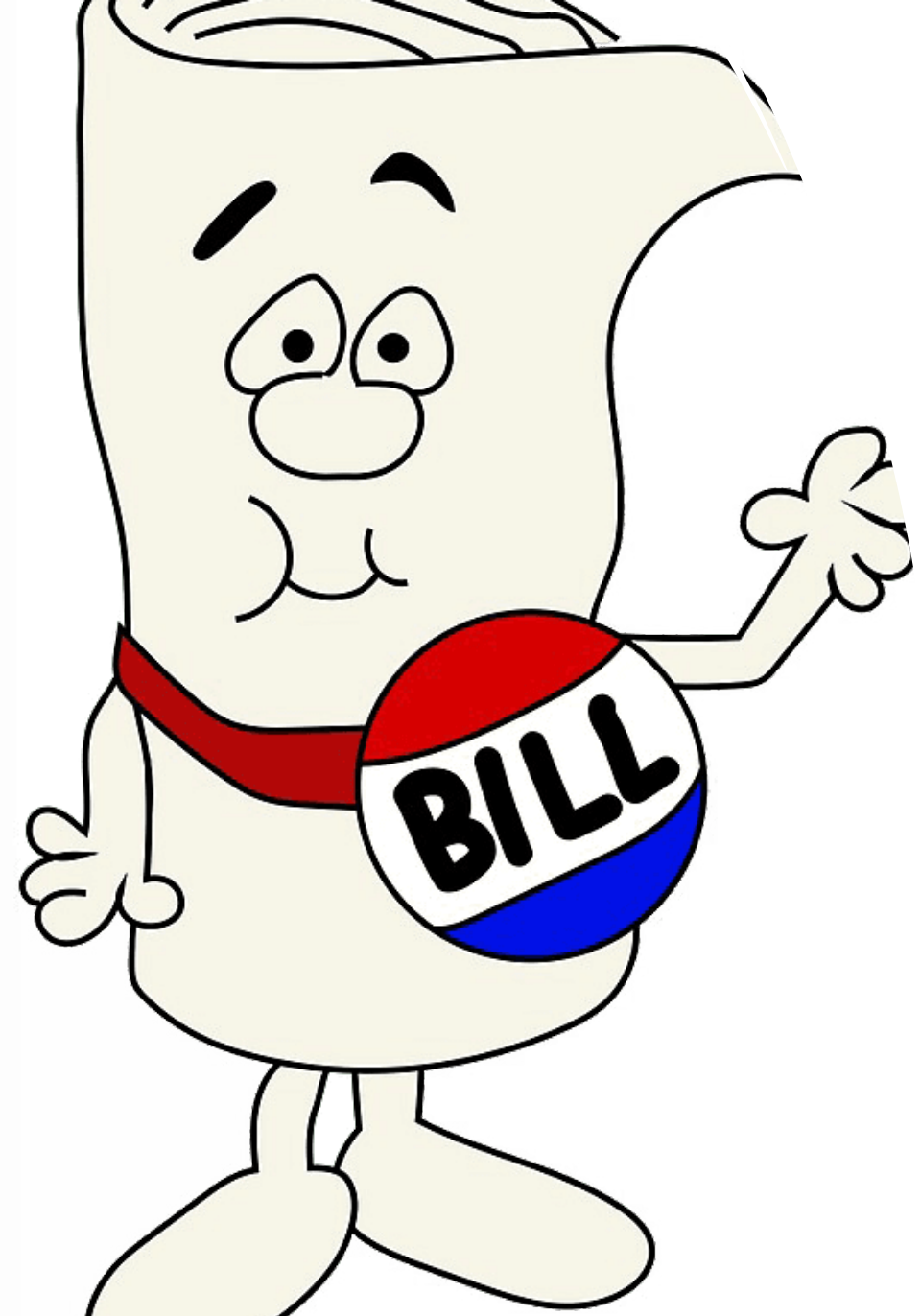
Opportunities for Local Advocacy

Government employees can be in a difficult position when trying to advocate for public health at both the state and local level:

- Lobbying elected officials as a representative of government can be tricky to navigate.
- Ethical and political considerations.

There are natural methods of advocating for public health in a local context:

- Transparency and accountability as a form of advocacy.
 - Accountability is both taking responsibility for problems AND celebrating positive programs and outcomes.
- Partnerships with non-governmental organizations can build local community support.
- Framing public health services in terms of common priorities.
- Meeting the community's needs can build trust and build natural support for services.
 - Missouri Public Health Institute Survey:
 - 60% of Missourians trust their local public health department.
 - 79% of Missourians who used LPHA services reported a positive experience.
 - Trust for local public health is higher than for state and national public health.



You Probably Already Know...

- Legislators introduce bills
- Bills go to committee
- If a bill passes committee it goes to a vote in the legislature
- Bills passed by both chambers of the legislature go to the executive
- The executive can either sign the bill into law or veto the bill

What About Missouri?

The members:

- House of Representatives: 163
 - Age of 24+
 - Voter for two years
 - Resident for one year
 - Serve a two year term
- Senate: 34
 - Age of 30+
 - Voter for three years
 - Resident for one year
 - Serve a four year term

No person may serve more than eight years in a chamber.



Leadership in the Chambers

House of Representatives

- Speaker of the House
- Speaker Pro Tem
- Majority and Minority Floor Leaders (and assistant floor leaders)
- Majority and Minority Whips
- Caucus Chairs and Secretaries
- Committee Chairs

Senate

- Lt. Governor is the presiding officer of the Senate
- President Pro Tem
- Majority and Minority Floor Leaders (and assistant floor leaders)
- Minority and Majority Caucus Chairs, Secretaries, and Whips
- Committee Chairs

Leadership in the Chambers

House of Representatives

- Speaker of the House
- Speaker Pro Tem
- Majority and Minority Floor Leaders (and assistant floor leaders)
- Majority and Minority Whips
- Caucus Chairs and Secretaries
- Committee Chairs

Senate

- Lt. Governor is the presiding officer of the Senate
- President Pro Tem
- Majority and Minority Floor Leaders (and assistant floor leaders)
- Minority and Majority Caucus Chairs, Secretaries, and Whips
- Committee Chairs

Legislative Timeframe



- Prefiling starts on December 1 prior to session**
- Convene in January (first Wednesday after the first Monday)**
- Budget must be approved by the first Friday after the first Monday of May**
- Adjourn in May (first Friday after the second Monday)**
- Governor has 45 days to act on a bill if session is adjourned**
- If any bills are vetoed the legislature reconvenes in September**

Zooming in on the Process: Filing/Committees

- Bills can be filed in either chamber, except appropriations bills must start in the House.
- Pre-filing starts on Dec. 1 preceding session and filing is allowed until the 60th day of legislative session.
- Filed bills are first and second read in the chamber, then assigned to a committee.
 - Legislators must request their bill be assigned to a committee, and the committee assignment is at the discretion of the speaker or president pro tem.
- Committees hold a public hearing where the bill is presented by the sponsor and proponents and opponents can testify on the bill.
- Committees vote in bills in executive session, where members may debate and discuss but testimony is not permitted. Outcomes may be:
 - Voting “do pass”
 - Amending the bill and voting “do pass”
 - Reporting “do pass” with a committee substitute
 - Report the bill as “do not pass”
- In the House, a passed bill must be reported but appears in a Rules committee before reaching the chamber.
- In the Senate, a passed bill does not have to be reported by the Chair.

Zooming in on the Process: In the Chamber

- In both the House and Senate, reported bills are placed on Perfection Calendar.
 - Formal and informal calendars.
- Bills are brought to the House or Senate floor and debated, amended, or replaced with the substitute bill.
 - Single Subject bills v Omnibus bills
 - Missouri Constitution Article III, Section 23 says bills must be “one subject”
 - Hammerschmidt
- The chamber votes on the perfection of a bill – if perfected it is placed on the “Bills for Third Reading” calendar
- The chamber votes on the bill to be “Third Read and Passed”
- If passed, the bill is sent to the other chamber... to start the same process again!

Zooming in on the Process: Final Passage

- If both chambers successfully pass identical versions of the same bill, the bill is “Truly Agreed to and Finally Passed” (TAFP)
- BUT if a bill passes both chambers and are different, the two chambers must agree on an identical version before being voted TAFP.
- How this works:
 - The second chamber asks the originating chamber to accept their version.
 - The originating chamber can vote to pass or reject the new version.
 - If the originating chamber votes to reject, they ask the second chamber to grant a conference.
 - Both chambers appoint a bipartisan membership to a conference committee that negotiates a compromise bill.
 - The compromise bill can remove components of the bill but cannot add new language unless authorized to do so by both chambers.
 - A Conference Committee Substitute version is sent back to the chambers, with the originating house acting first. The chambers can vote to pass the compromised version or not.

Zooming in on the Process: Making the Bill into Law

- When a bill is TAFP it is ordered enrolled, typed in its finally approved form, and printed (and the versions passed by both chambers are compared and proofed for errors).
- TAFP bills are signed by the House speaker and Senate president or president pro tem.
- Signed bills are sent to the governor.

- The governor has 15 days to act if delivered during session and 45 days if the legislature is adjourned.
- If the governor signs the bill it is delivered to the Secretary of State and becomes law – taking effect 90 days after session
- If the governor vetoes the bill it is returned to the chamber of origin. A veto may be overridden by a two-thirds majority vote in both houses.
- If a bill is neither signed nor vetoed in the allotted time the bill becomes law as if the governor had signed it.

Zooming in on the Process: Other Interesting Things

- The only legislation the General Assembly is Constitutionally required to pass are the appropriations bills.
- The GA must pass a balanced budget based on the consensus revenue estimate.
 - The House has much stricter rules that require any addition of funding to be offset by a reduction in funding elsewhere.
 - Final appropriations bills are almost always determined in conference committee.
- Missouri's governor has the power of the "line-item veto." This power means the governor can veto individual lines of appropriations bills without vetoing the entire bill.
- Missouri's governor also has the power to "withhold funds" meaning the appropriation is still approved in the state budget but will not be spent unless released by the governor.



MISSOURI DEPARTMENT OF
**HEALTH &
SENIOR SERVICES**

QUESTIONS?



Daniel.Bogle@health.mo.gov



(573) 522-2843



Health.Mo.Gov



MISSOURI DEPARTMENT OF
**HEALTH &
SENIOR SERVICES**

PROMOTING HEALTH AND SAFETY



Lafayette County Health Department Resources/Referral Guide

Medical emergency? Call 911.

Mental health crisis? Call or text 988.

988 – Suicide & Crisis Lifeline provides free, confidential support 24/7 for people in emotional distress or suicidal crisis across the U.S.

State Agencies	Phone & Address	Services Provided
MO Health Net- Missouri Medicaid Program	(573)751-3425 614 Howerton Ct. Jefferson City, MO 65109	Provides medical services to those who meet certain eligibility requirements as determined by Family Support Division (FSD)
Legal Aid of Western Missouri: Advocates for Family Health	Annie Colwell (816)474-6750 ext 5289 AColwedll@lawmo.org 4001 Dr. Martin Luther King Jr. Blvd #300 Kansas City, MO 64130	Helps address rejected MO Health Net applications, service/benefit denials including medical equipment, termination of Mo Health Net coverage, and billing problems.
Temporary MO HealthNet during pregnancy	Shelly Harden at HCC (660)214-2869 See page 2 for more temp Medicaid liaisons	TEMP Medicaid allows qualifying pregnant women prenatal care through MO HealthNet benefits for a period of time.
Missouri Division of Family Services	(660)259-2294 736 S Business Highway 13, Lexington MO 64067	Services: SNAP, Medicaid, MO Health Net, TANF

TEL-LINK Parent Link	(800)835-5465 Health.mo.gov/tellink (573)882-7323 2800 Maguire Blvd Columbia, MO 65211 https://education.missouri.edu/parentlink/	FREE confidential Maternal and Child Health Referral Service for WIC, Child Care, Social Services, Healthy births/babies etc.
Aunt Bertha	Findhelp.org	Database of information finding local food, health, housing and employment programs in seconds.
Medical/Dental	Phone & Address	Services Provided
Lafayette County Health Department	(660) 259-4371 547 S Business Highway 13, Lexington MO 64067 Like our Facebook page	WIC, Immunizations, Tobacco Cessation, Vital Records, Lab Draws, Environmental Services and more.
Lexington Medical Clinic	1026 Main Street Lexington MO 64067 (660)259-2216	Identify and treat common medical problems
UMKC Dental Hygiene	UMKC School of Dentistry 650 E 25 th Street, Kansas City MO 64110 Tuesday-Friday Call (816)235-2100 Email: dh2020screening@gmail.com	Free Dental Cleaning if you: do not have braces, most teeth are present, no dental cleanings in about 2 years, no immediate extractions needed
Lexington HCC Waverly HCC Concordia HCC Buckner HCC Carrollton HCC	Lexington:(660)251-6440 825 S Business Highway 13, Lexington, MO 64067 Waverly: (660)493-2262 608 Missouri St. Waverly, MO 64096 Concordia: (660)463-0234 206 N. Bismark Concordia, MO 64020 Buckner: (816)249-1521 324 S. Hudson Buckner, MO 64016	Medical, Dental, and Behavioral Health <i>Takes Medicaid & uses sliding scale fees for non-insured</i>

	Carrollton: (877)344-3572 300 E. 9 th St. Carrollton, MO 64633	
Lexington Dental Center	(660)259-3381 1511 Main St Lexington MO 64067	Accepts private insurance plans
Health Care Collaborative of Rural Missouri	(660)259-2440 825 S Business Hwy 13 Lexington MO 64067	Temp Medicaid- call to make an appointment 340B Discount Drug Program
Johnson County Community Health Department	Katie Volner (660)747-6121 723 PCA Road Warrensburg MO	Temp Medicaid- call to make an appointment Immunizations, Family Planning, Pregnancy Testing and more
Prenatal Care providers	Phone & Address	Services Provided
Lexington Medical Center	1026 Main St Lexington, MO 64067 (660)259-2216	Delivery at CenterPoint, Independence
Family Practice Associates of West Central	1200 West 22 nd , PO Box 756 Higginsville MO 64037 (660)584-7751 513 Burkarth Road Warrensburg MO 64093 (660)747-7751	Delivery at Western Medical Center in Warrensburg
Higginsville Medical Center	3401 Pine St Higginsville MO 64037 (660)584-2192 Dr. Michelle Lemberger MD	Delivery at CenterPoint, Independence
Odessa Medical Group	316 W. US Highway 40 Odessa MO 64076 (816)633-5774	Delivery at CenterPoint, Independence

OB GYN Specialists	415 Burkarth Road Suite A Warrensburg MO 64093 (660)429-2228	Delivery at Western Medical Center in Warrensburg
TreeTop Pediatric Dentistry	Odessa (816) 624-2244 406 N 4 th St, Suite A	Accepts private insurance plans (Working on getting approved for Medicaid, hopefully June/July 2025)
Transportation	Phone & Address	Service Information
OATS Transit United Healthcare Community Plan of MO Home State Health Missouri Care	OATS: (800)276-6287 United: (866)292-0359 Home State: (855)694-4663 Missouri Care: (800)322-6027	Call 5 days in advance for Medicaid plan Lexington 9 a.m. - 1p.m. .50 cents per stop Odessa 9 a.m. - 1p.m. .50 cents per stop Higginsville 9a.m- 1 p.m. .50 cents per stop
HCC Network Rides	Lexington: (660)259-6440 Main: (877)344-3572 825 S Business Highway 13, Lexington, MO 64067	Provides transportation to decrease the barriers and allow for better health outcomes. Rides provided to medical, dental, peer recovery, community health worker, and behavioral health appointments.
Non-Emergency Medical Transportation (NEMT)	Visit mtm-inc.net/missouri to schedule a ride online Or Call your health plan number Monday - Friday, 7am to 6pm	NEMT is a service for eligible MO HealthNet participants that provides transportation to covered MO HealthNet services
Breastfeeding Services	Phone & Address	Service Provided
Stephanie Deveau <i>Certified Lactation Consultant</i> Gabriela Meza <i>Breastfeeding Peer Counselor & CLC</i>	Lafayette County Health Department-WIC 547 S. Business Hwy. 13 Lexington, MO 64067 (660)259-4371	Provides Breastfeeding Education and Support to Missouri WIC Breastfeeding Families (breast pumps, breastfeeding help, nursing bras)

Pettis County Milk Depot	660-827-1130 Pettis County Health Center 911 E. 16 th Street Sedalia, MO 65301	Collection site for approved human milk donors.
Andrew County Milk Depot	816-324-3139 Andrew County Health Department 106 North 5 th Street Savannah, MO 64485	Collection site for approved human milk donors.
Cass County Milk Depot	816-380-8425 Cass County Health Department 1411 S Commercial St, Harrisonville, MO 64701	Collection site for approved human milk donors.
Community & Mental Health Services	Phone & Address	Services Provided
Nurse-Family Partnership	Call (816)513-6386 2400 Troost Avenue Suite 1400 Kansas City, MO 64108 www.kcmo.gov/health	Free to eligible women. Must be their first pregnancy. Provides connection with a RN during her pregnancy to child's second birthday. RN will offer support, advice, and information you need to have a healthy pregnancy, a healthy baby and be a great mom.
Early Head Start Prenatal to Age 3yrs	(660)584-3131 Missouri Valley CAA Family Resource Center 200 Fairground Ave, Suite 103 Higginsville MO	Monthly home visits, child care at a local licensed center at NO COST to you, diapering and supplies while at the center, and support system as you go down parenting path. Must qualify
Head Start	(660)584-3131 Missouri Valley CAA 1712 N Main St Higginsville	"Ages 5 weeks to 2 years and offers childcare for little to no cost with our income base program. We require parents to meet a weekly work/school requirement. Diapers and wipes provided."
Missouri First Steps Early Intervention	(866)583-2392	First Steps is Missouri's Early Intervention system that provides services to families and children birth to three years of age with disabilities or developmental delays.
Odessa Community Service Center	(816)230-7558 212 S Second St Odessa, MO 64076 MWF 9am-12:30pm	Emergency assistance center providing utility assistance and a food pantry

<p>Grace Evangelical Lutheran Church <i>Swaddling Clothes</i></p>	<p>(660)259-2932 806 South Business Highway 13 Lexington, MO 64067</p> <p>2nd Saturday of each month from 9a.m-12:00p.m.</p>	<p>Offers infant & children clothes, wipes, diapers size 4-6, basic baby care essentials, Christian children's books and more to assist mothers and children</p>
<p>Children and Youth with Special Health Care Needs Program</p>	<p>(573)751-6246 or Toll-free (800)451-0669 Special Health Care Needs PO BOX 570 Jefferson City MO 65102</p>	<p>Provides assistance statewide for individuals 0-21 who have increased risk of medical conditions that may hinder their normal growth and development. Funding could include hospital visits, surgeries, therapy including speech and occupational, hearing aids, special formula etc.</p>
<p>Salem United Church of Christ</p>	<p>(660) 584-3603 1500 N Main St Higginsville, MO 64037 Tuesday 8:30am-11:30am & 1:30pm-4:30pm</p>	<p>The Church Women of Higginsville and Corder provide food pantry and food vouchers to community members. The food pantry provides 4-5 days' worth of food per family.</p>
<p>Missouri Valley Community Action Agency</p>	<p>Lexington (660)259-4013 Higginsville (660)584-3131</p>	<p>Housing, Job Training, GED Testing, Literacy Skills, Utility Assistance, Head Start & Early Head Start, Food Referrals and more</p>
<p>Altruism Media, Inc. (Mahi Clinic)</p>	<p>Call or Text: (844)860-0111</p>	<p>Serves birthing parents and their families in Missouri and Kansas. Get connected with a local community healthcare/social services worker: Assistance for finding local services include: WIC, Medicaid, food stamps, bills, gas, groceries, transportation and more! No fees for services provided at Altruism Media, Inc.</p>
<p>Bridge of Hope for Women</p>	<p>(816)520-7828 111 W. Main St. Richmond MO 64085</p>	<p>Ultrasounds, H.E.A.R.T education, Pregnancy Education & Testing</p>

Todays baby	Fiona Rice 617.206.6269 tdybaby@bu.edu Todaysbaby.org/enroll/?ws=0	Baby Care Education & Research Study Receive up to \$50 in gift cards, free videos/messages during pregnancy
Baby Grace	1211 S Business Hwy 13 Lexington, Missouri 64067 16 W 15 th St. Higginsville MO 64037 Janet Carroll (660)584-5902 301 S. 1 st St. Odessa, MO 64076 Jeannette Hisek (816) 516-3854	Diapers, wipes, o-5t clothes (once per month) a sometimes supplies other items for children. 4th Saturday 9-11 a.m. Lexington Tues, Thurs, Friday 8 a.m. -12 Higginsville 2 nd Wednesday 5pm-6pm Odessa
Helen's House	211 W Mason St, Odessa	Every 60 days each woman and child can choose two new full outfits Proof of residency of required Free Service.
Lexington Ministerial Alliance	1211 S 13Th St Lexington, MO 64067-7187 Call MVCAA (660)584-3131	Charity that collaborates with MVCA on utility bill assistance
Affordable Connectivity Program	877-984-2575	FCC program that helps connect families and households struggling to afford internet Service.
Easterseals Midwest	1508 NW Vivion Road Kansas City Mo 64118 Main (800)200-2119 Parent Educator: Bridget Beach Cell (816)337-0856	Provides FREE support for families with young children with and without disabilities as well as prenatal women Services provided: wipes, diapers, books, developmental screenings, parent education and more!
Christian Family Services	(913)383-3337 www.cfskc.org Text/Call (913)522-2372 Email: susan@cfskc.org	Support on Adoption. Receive personalized support, compassion, and guidance and you decide.
Parents As Teachers	Toll free: (866) 728-4968 Lexington (660) 259-2192 Higginsville (660) 584-6069 Odessa (816) 633-3298 Concordia (660) 436-2261 Waverly (660) 493-2811	Parents as Teachers provide services to pregnant women and families with children from birth through Kindergarten, PAT helps caregivers connect with their child's early development and build a lifetime foundation for academic success.

Catholic Charities Moms Empowerment Program	Tricia Johnson Family Development Specialist Cell: (816)617-9739 Fax: (816)472-5423 Email: tjohnson@ccharities.com	Educational Program for families throughout pregnancy and until the child turns 1 year. Services financial assistance related to pregnancy & infant care, education regarding pregnancy and parenting, monthly check ins. Adoptions Services.
The Missouri Veterans Commission Works	https://veteranbenefits.mo.gov/	The Missouri Veterans Commission works with Missouri Military Veterans and their families to secure benefits. This portal serves as a guide to assist Veterans discover free available resources (see website)
House of Hope	(660)259-4766 Hotline 888-259-6795 301 Broadway Lexington, MO 64067	Provides 24 hour hotline and emergency shelter
Missouri First Steps Early Intervention First steps contd.	(866)583-2392	First Steps is Missouri's Early Intervention system that provides services to families and children birth to three years of age with disabilities or developmental delays.
Compass Health Network	(844)853-8937 1810 Spruce St. Higginsville, MO 64037 Suicide and Crisis Lifeline: 988	Provides mental health and substance use disorder treatment services for children and adults.
Special Needs Services of Ray County	810 E Main St Richmond, MO 64085 (816)470-5045	Nonprofit organization that provides case management services to individuals with developmental disabilities that live in Ray County
Life Recovery Consulting	Robert Cox LPC Therapist, Trauma, and Autism Specialist (816)470-0118	Autism, Trauma, & Mindfulness therapy
The Missouri Tobacco Quit Line	1(800)QUIT-NOW 1(800)784-8669	
Alcoholics Anonymous	1(816)471-7229	
Narcotics Anonymous	1(877)855-8590	
Parental Stress Hotline	1(800)367-2543	

Child Abuse Hotline	1(800)392-3738	
Compass Health Network: Truman Lake Women & Children's Treatment Center	Please Call (844)853-8937 Corporate Office 1800 Community Drive Clinton, MO 64735 (844)853-8937	Services: Women's Trauma, Process Group, Perinatal & Postpartum Support, Parenting Support Groups, Substance Abuse Treatment, Recovery Support, Self-Development, Individual & Group Counseling, Medication Services and more.
Infant Loss Resources	https://www.infantlossresources.org/ Email: Vikki Collier at Vikki@infantlossresources.org Phone: (800)421-3511 Registered Charity: 43-1344645 1120 South 6th Street, Suite 500 St. Louis, Missouri 63104	Free Baby Beds (see website) The Infant Loss Family Support Program assists parents, siblings, extended family members, friends, co-workers, childcare providers and other professionals in learning to build the necessary skills to cope with the sudden death of an infant to any cause. We offer support groups, peer support, commemorative events, and online, telephone and email support
Postpartum Support International	(800)944-4773 https://www.postpartum.net	For moms and dads for PP depression
National Suicide Prevention Lifeline	988	Available 24/7
Maternal Mental Health Hotline	(833)943-5746	Confidential toll free hotline for expecting and new moms experiencing mental health challenges
Loss & Grief Support Class	Contact Vicki Mears at Crossroads (816)268-2664 Mondays 11-12:15 at the Odessa First United Methodist Church	Support Class to cope with Loss and Grief
Lutheran Family and Children's Services	Website: lfcsmo.org Phone: 866-326-5327 Emergency Adoption Line 1800-785-8546 open 24/7 help@lfcs.org	Non-profit social services agency with programs to support education and empowerment for pregnant clients that are considering adoption.
Food Programs	Phone & Address	Services
Harvesters	Lexington United Methodist Church 1211 S Business 13, Lexington, MO 64067	Food Pantry: 2 nd Monday of the month 9-11 AM (for anyone) Commodities: 4 th Thursday of the month 8:30-11am (income requirements & Lafayette county residents only)

Food Pantry	Presbyterian Disciples Church 914 Franklin Ave, Lexington, MO, 64067 641-0904	The first 3 Fridays of the month 9-11 am (income requirements & Lexington school district residents)
A I M Food Pantry	Community Christian Center 710 W Highway 224 Wellington, MO,64097 Lower Level 816-214-0356	3 rd Wednesday 1-3 pm 3 rd Saturday 7-9 pm Wellington School District Residents
Food Pantry	Salem United Church of Christ 1500 N Main St, Higginsville, Mo 64037 660-584-3603	Every Tuesday 8:30 am-4:30pm Need ID & proof of residency at first pick up Higginsville School District Residents
Other Harvesters Locations Local Harvesters Contd.	Higginsville- First Assembly of God Church 1050 W 19 th St, Higginsville, MO 64037 Buckner- Heart of Gold Fellowship 3720 N Buckner Tarsney Rd, Buckner, MO 64016 Richmond- Salvation Army Family Store and Donation Center 104 E N Main St, Richmond MO 64085	Higginsville 3 rd Thursday, 9:00 am-11:00 am Buckner 2 nd Monday of the Month 4:30-6:30 pm Richmond 2 nd Friday of the month 11:00 am-1:00 pm

This project is/was funded in part by the Missouri Department of Health and Senior Services Maternal Child Health Services Contract #DH220051098, and is/was supported by the Health Resources Services Administration (HRSA) of the U.S. Department of Health and Human Services (HHS) under grant #B04MC52935, Maternal and Child Health Services for \$12,742,189, of which \$0 is from non-governmental sources. This information or content and conclusions are those of the author and should not be construed as the official position or policy of, nor should any endorsements be inferred by HRSA, HHS or the U.S. Government

This institution is an equal opportunity provider.