



MISSOURI DEPARTMENT OF  
**HEALTH &  
SENIOR SERVICES**

# **Office of Minority Health and Health Equity**

Division of Community and Public Health

---

**Nathan James**

Health Equity Program Specialist



# OUR MISSION

To promote health and safety through prevention, collaboration, education, innovation and response.



# OUR VISION

Optimal health and safety for all  
Missourians, in all communities,  
for life.



# OUR VALUES

Excellence | Collaboration | Access  
Integrity | Accountability



# OUR ACTION

Our strategic plan includes six priorities that will help us achieve our mission and vision.

# SHIP - Social Drivers of Health



## Missouri's State Health Improvement Plan (SHIP)

### Priority Issue 5: Social Drivers of Health

#### Goals:

- Advance health equity in Missouri by creating and promoting a set of actionable resources that address the social determinants of health.
- Improve health equity by building and leveraging collaborative public health efforts.

# Meet our awesome team



**Valerie Butler**

Special Professional  
Assistant



**Sabrina Blevins**

Lead Admin.  
Support Assistant



**Nathan James**

Health Equity  
Program Specialist



**Angel Surdin**

Office Chief

# Office of Minority Health and Health Equity



**Community  
Engagement**



**Health Equity  
Stakeholder Committee**



**Health Literacy  
Initiatives**



**Social Drivers of  
Health Dashboard**

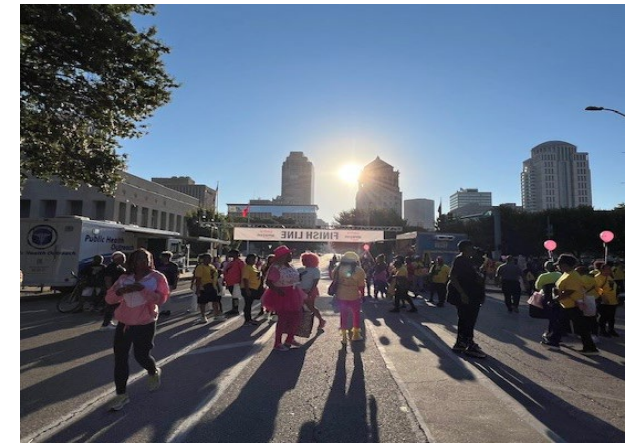


# Community Engagement





# Community Engagement





# SAVE THE DATE

Faith and Health: Purple Sundays Offer Education and Support for Memory Loss

Learn how to access free care and support services, engage in research and educate members of the faith community about Alzheimer's and other dementias.

**FEBRUARY 26, 2025**

11:30 a.m. - 12:30 p.m.

Click [here](#) to register or scan the QR code



# SAVE THE DATE

Minority Engagement in Donation and Transplant Programs

Learn more about organ donation and transplants, and bring questions you have for our Organ and Tissue Donor Program to gain a clearer understanding of this vital and lifesaving act.

**SEPTEMBER 16, 2025**

12 - 1 p.m.

Click [here](#) to register or scan the QR code



# SAVE THE DATE

SDOH Series: Radon, Lung Health and Health Equity

Learn more about radon risks, how they connect to lung cancer and how to take action to improve environmental health and health equity.

**JANUARY 29, 2026**

12 - 1 p.m.

Click [here](#) to register or scan the QR code



# SAVE THE DATE

Addressing Disparities in Alzheimer's: A Religiously-Tailored Approach

Learn how researchers and faith communities from Kansas City to St. Louis are creating innovative methods and building integrative spaces for Alzheimer's education and screening.

**MARCH 18, 2025**

12 - 1 p.m.

Click [here](#) to register or scan the QR code



# SAVE THE DATE

Tobacco Prevention to Promote Health Equity

Learn more about tobacco and lung cancer disparities and resources to promote prevention efforts to improve health equity.

**NOVEMBER 4, 2025**

12 - 1 p.m.

Click [here](#) to register or scan the QR code



# SAVE THE DATE

SDOH Series: CPR, Heart Health and Health Equity

Learn more about bystander CPR data, the importance of learning CPR and how to effectively prepare for cardiac emergencies.

**FEBRUARY 3, 2026**

12 - 1 p.m.

Click [here](#) to register or scan the QR code



# SAVE THE DATE

Minority Mental Health Webinar Series

Learn more from professionals at the University of Missouri's Department of Psychiatry about ways to dispel myths and provide tips to address mental health disparities

**July 24:**  
Dispelling Mental Health Myths

**August 28:**  
Providing Mental Health Tips

Join us from  
12 - 1 p.m.



Click here to register or scan the QR code



# Webinars



# Office of Minority Health and Health Equity: Faith and Health Summit – May 2024



MISSOURI DEPARTMENT OF  
**HEALTH &  
SENIOR SERVICES**

Office of Minority Health and Health Equity



Health Equity Stakeholder Committee Meeting



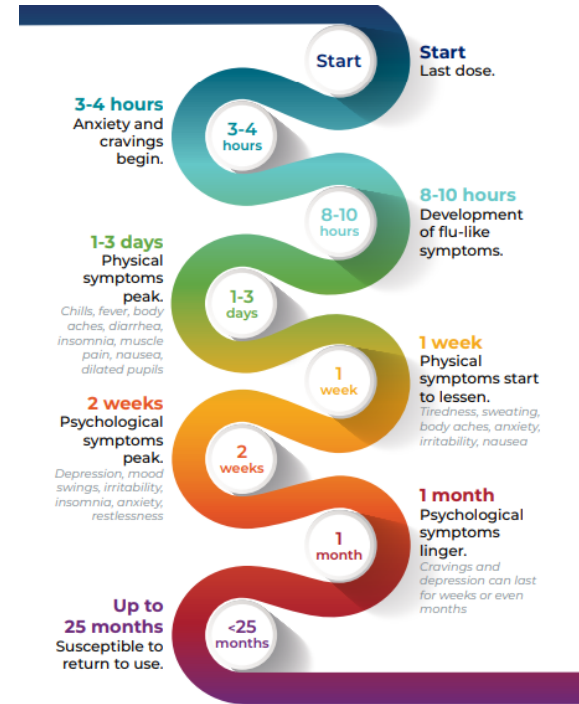
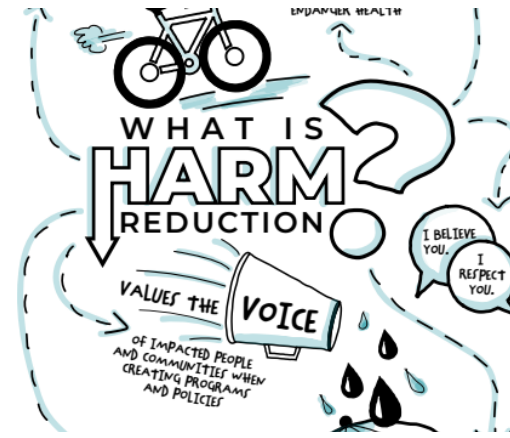
MISSOURI DEPARTMENT OF  
**HEALTH &  
SENIOR SERVICES**

Office of Minority Health and Health Equity

# Health Literacy

## RESPONDING TO OPIOIDS IN MISSOURI

Instead of	Replace With	Because
Addicts, junkies	People who use drugs (PWUD), people with Substance Use Disorder (SUD)	These terms honor the belief of many clinicians and people with substance use disorder that recovery is an ongoing and variable process
Former drug addicts, clean	People who used to use drugs, people in recovery, substance-free, abstinent	
Sober	Well, healthy, in recovery	
Relapse	Return to use	
Alcoholics	People with Alcohol Use Disorder (AUD)	
Risk factor, risky behavior	Potential, vulnerability	
Druga abuse.	Substance use, druqa use.	These terms reduce the



Information from [Steve Bummier Hope Network](#)

**Administer Naloxone**

- Peel back the tab with the circle to open it. Do not prime or test the spray.
- Tilt their head back, insert the nozzle fully inside the nostril and press the plunger to dispense the contents of the product entirely.
- Additional doses can be given every two to three minutes until they are responsive.

**Rescue Breathing**

- If they are not breathing, you can begin giving rescue breaths.
- With the head back and the nose pinched, breathe into their mouth.
- Start with two breaths, then do one breath every five seconds.
- If necessary, and you are trained to do so, perform CPR.
- Keep going until help arrives.

**Wait for Help**

- Continue rescue breaths or CPR until help arrives.
- Stay with them. If you must leave, turn them on their side to prevent choking.
- If they wake up, explain what happened.

Did you know? The Good Samaritan Law prevents you and the person who overdosed from being charged with drug possession.



# Social Drivers of Health Dashboard

DHSS Home » Healthy Living » Healthy Families » minorityhealth » sdh-dashboard

The Missouri Department of Health and Senior Services (DHSS) Social Drivers of Health Dashboard is designed to leverage data to address health disparities in Missouri. This dashboard can be a resource for local public health agencies, community organizations, policymakers, and Missouri citizens. The dashboard intends to make data easily accessible to stakeholders and citizens so that all Missourians can achieve optimal health and safety in their communities for life.

## Missouri's Social Drivers of Health Dashboard

**Social Drivers of Health** can be described as the social and economic conditions in which people are born, live, work, play, worship and age. All of these factors work together to determine a wide array of health outcomes or risks. The Social Drivers of Health allow for an all-encompassing view of the overall health of an individual within the community.

**These drivers** are centered around the fact that all people should have equal access and opportunity to achieve their best health, both mentally and physically. By displaying this data, individuals can be informed to make decisions that could impact their communities and address health disparities throughout the state.

Click on the [Social Drivers of Health](#) button to the right to navigate through each of following topics: Education, Household Income, Poverty Status, Food Assistance Programs, Unemployment and Uninsured.

Click on the [Unhoused Population](#) button to the right to explore data regarding Missouri's unhoused population throughout different regional and demographic breakouts.



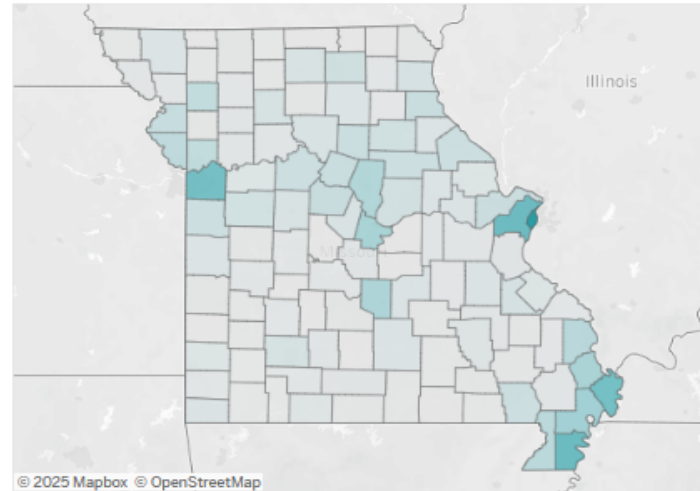
Click on a button below:

[Social Drivers of Health](#)

[Unhoused Population](#)

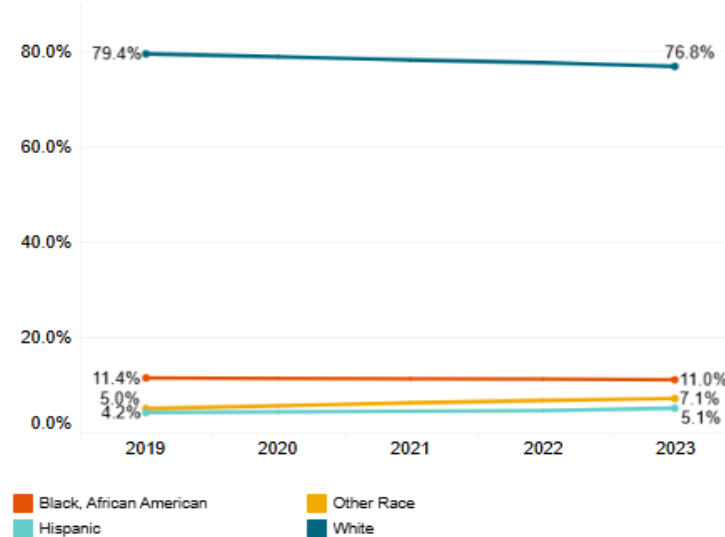
### Population Percentages by County and Selected Demographic

Select Year:  Select Population:  Map Legend: 0.1% 42.9%



© 2025 Mapbox © OpenStreetMap

### State Total Population by Race/Ethnicity



# Social Drivers of Health Data Dashboard



MISSOURI DEPARTMENT OF  
**HEALTH &  
SENIOR SERVICES**



MISSOURI DEPARTMENT OF  
**HEALTH &**  
**SENIOR SERVICES**



**Thank you!**



[Nathan.James@health.mo.gov](mailto:Nathan.James@health.mo.gov)



[Health.Mo.Gov](http://Health.Mo.Gov)

